



# STI-7100K CCTV Camera Housing

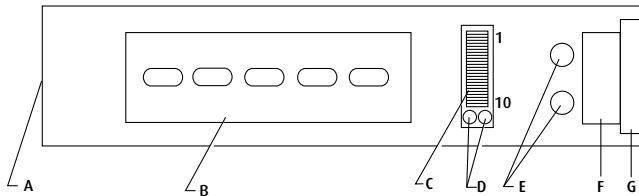
With Heater, Blower, Sun Shield & Mounting Bracket  
STI-7100 (above without Mounting Bracket)



## FEATURES

- Indoor/outdoor enclosure
- Spring assisted forward opening lid
- Mounting bracket, heater, blower and sun shield
- Temperature reduced by 4°F (2°C) with sun shield
- 2 cable entry cord grips on bottom of enclosure with minimum diameter of .24" (6mm) and maximum diameter of .41" (10mm)
- Aluminum construction

## INTERNAL LAYOUT



**NOTE:** If you are not using two separate power supplies (one for camera, one for heater/blower) then jumper wires will need to be used. You can bring the power into terminals 1 & 2 and use jumper wires to terminals 9 & 10. The power is not distributed when inputting power into the terminal strip at any of the inputs.

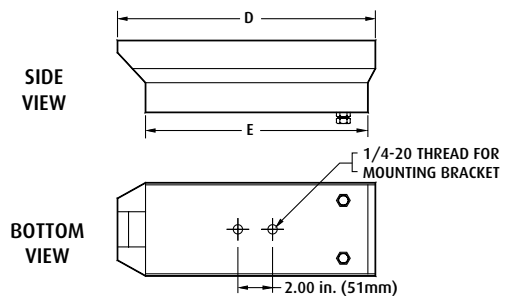
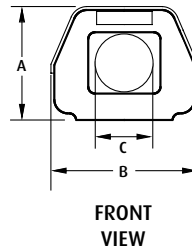
## TERMINAL STRIP WIRING

- A. Lens
- B. Camera mounting plate
- C. Terminal strip
- D. Thermostats
- E. Wire entry
- F. Blower
- G. Heater

- 1. Camera Power (+)
- 2. Camera Power (-)
- 3. Lens Com
- 4. Focus
- 5. Zoom
- 6. Iris
- 7. Not used
- 8. Ground
- 9. Enclosure Power } 24 VAC
- 10. Enclosure Power }

## DIMENSION DRAWING

Enclosure Dimension	STI-7100
A	4.5 in. (114mm)
B	5.7 in. (145mm)
C	2.1 in. (53mm)
D	16.3 in. (414mm)
E	12.84 in. (326mm)



## SPECIFICATIONS

Model	STI-7100K
Input Voltage	24 VAC
Power	Heater: 25W Blower: 2.3W
Construction	Aluminum
Viewing Window	2.125" (54mm)
Max. Size Camera & Lens	6.85 x 3.54 x 2.85" (174 x 120 x 72mm)
Heater & Blower Activates	ON: 50°F ± 9°F (10°C ± 5°C) OFF: 68°F (20°C)
Blower Activates	ON: 95°F ± 9°F (35°C ± 5°C) OFF: 72°F (22°C)
Weight - Camera housing	3.8 lbs. (1.72 kg)
Weight - Mounting brkt.	1.92 lbs. (.87 kg)
Gross Weight (STI-7100)	4.72 lbs. (2.14 kg)
Gross Weight (STI-7100K)	6.9 lbs. (3.1 kg)

## THIS PACKAGE INCLUDES:

- PCS.
- 1 Housing with heater, blower and sun shield
  - 2 Cord grip
  - 2 Screws (1/4-20 x 5/8") for housing to bracket
  - 1 Screw (1/4-20 x 3/8") for camera
  - 1 Mounting Bracket (STI-7100K only)
  - 3 Screws for mounting housing to wall bracket
  - 3 Plastic anchors