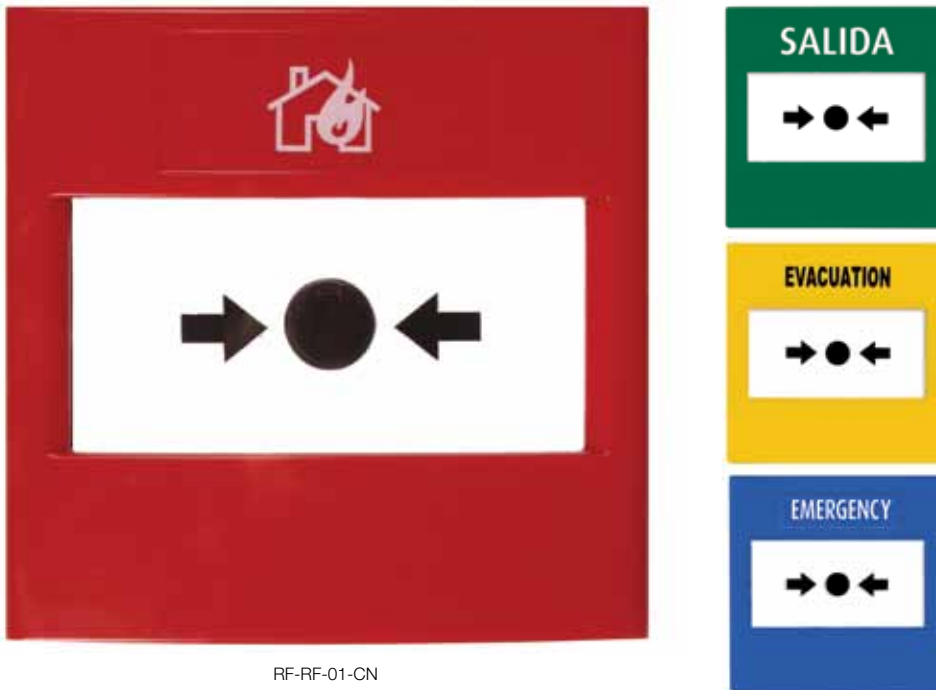


STI ReSet Call Point Series



RF-RF-01-CN

PRODUCT OVERVIEW

The 'ReSet' is a unique switch that mimics the feel of breaking glass while offering the user the benefits and environmental advantages of a resettable operating element.

The 'ReSet' uses a simple yet ingenious patented mechanism which consists of a rigid plastic operating element and an over center spring mechanism. This arrangement provides real action upon operation and simulates break glass activation.

An activation indicator drops into view at the top of the window after the 'ReSet' has been operated. The unit is then simply reset with a key and is again ready for use.

HOW IT WORKS

The 'ReSet' call point is compatible with most European standard conventional fire alarm systems. It is safe for use in areas where glass cannot be used (e.g. food processing plants, restaurants and activity centers).

Simple key reset provides an ideal solution for areas that suffer from a high number of false activations such as schools, shopping centers and other public buildings.

FEATURES

- Positive activation that mimics the feel of breaking glass.
- Visible warning flag confirms activation.
- Simple key to reset operating element - no broken glass.
- No glass elements to break, lose or incorrectly fit during installation.
- Glass appearance maintains operator deterrence.
- Extremely attractive, high value look and feel.
- Low profile, heavy-duty terminations - Two built-in resistor values.
- Double pole version available.
- Available in five colors.

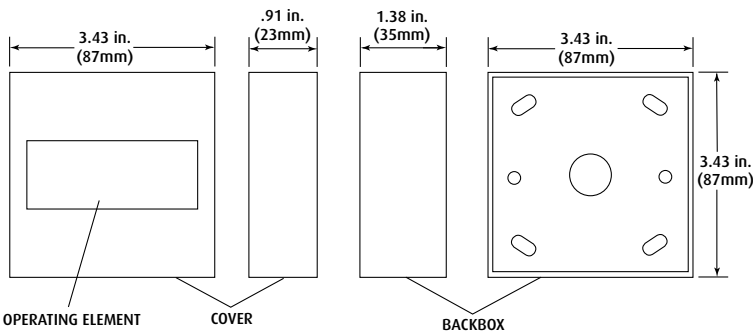
STI ReSet Call Point Series

Dimensions and Technical Information

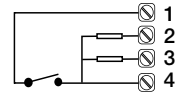
TECHNICAL SPECIFICATIONS

Current Rating (All Series)	3 Amps 12 - 24V DC
Current Rating (Series 02 & 11)	3 Amps 125 - 250 V AC
Low Current Rating (All Series)	1 - 100 mA 5 - 12V DC
Gold contacts are especially suitable for low current & voltages. Typically they're used in range from 5v, 1 mA to 12V 100 MA DC	0.1 Amps 125 - 150V AC
Housing and Mounting Box Material	Polycarbonate
Electrical Contact Material	Silver plated brass
Operating Temperature	-20°C to +65°C (-4°F to 149°F)
Installation Terminal Conductor Size	0.5mm - 2.5mm
Colors	Red, Yellow, Green, Blue and White
Mounting	Flush or surface with backbox
Red only certification	EN54-11, Cert No. 653a/02 for Red Series 01 only

NOTE: ReSet Mechanism Patent Application No. 2406 717/322827.7 / ReSet Flag Patent Application No. 2430 554/0624798.5 / European Patent Application No. 04255903.9

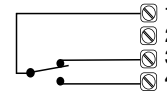


SERIES 01



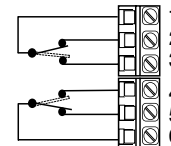
Series 01 denotes a ReSet call point that will interface with most European standard conventional fire alarm systems. It is fitted with two internal resistors 470 (R1) and 680 (R2) ohms. These are easily accessed through the installer terminals as illustrated.

SERIES 02



Series 02 denotes a ReSet call point that is fitted with a single pole changeover switch. Both the normally open and normally closed contacts are easily accessed through the installer terminals as illustrated.

SERIES 11



Series 11 denotes a ReSet call point that incorporates two independent single pole changeover switches providing double pole changeover contacts. Easily accessed through the installer terminals as illustrated.

All switch arrangements shown with ReSet in standby.

HOW TO ORDER

All ReSet call point numbers begin with RP and contain four other characters.

EG: RP-RS-01-CSS = ReSet Point, Red, Surface Mounted, Series 01 with optional Mini Stopper® II with Horn Cover

RP —	R	S	—	01	—	CSS
Prefix	Denotes color options R = Red Y = Yellow G = Green B = Blue W = White	Denotes mounting options F = Flush mounting S = Surface mounting		Denotes series & electrical arrangement 01 = Conventional fire model includes two resistor values 470 & 680 ohms 02 = Single pole changeover 11 = Double pole changeover		Cover options CN = No cover CI = Integral cover CM = Mini Stopper® (STI-6830 or STI-6831) CP = Call Point Stopper® (STI-6930 or STI-6931) CS = Mini Stopper II® without Horn (STI-6540 or STI-6545) CSS = Mini Stopper II with Horn (STI-6600 or STI-6605) CW = Mini Weather Stopper® (STI-6525 or STI-6535)



Safety Technology International, Inc.

2306 Airport Road
Waterford, Michigan
48327, USA

Tel: 248-673-9898
Fax: 248-673-1246
Tollfree: 800-888-4784
info@sti-usa.com
www.sti-usa.com

Unit 49G Pipers Road
Park Farm Industrial Estate
Redditch, Worcestershire
B98 0HU England

Tel: 44 (0) 1527 520 999
Fax: 44 (0) 1527 501 999
Free: 0800 085 1678 (UK)
www.sti-europe.com